



Air-to-air heat exchanger



Models

- 2 standard sizes
- Custom sizes upon request

Assets

- Up to 80% thermal energy recovered
- Can be used in corrosive environments
- Also suitable for existing farming systems
- Low running costs



ACE air to air heat exchanger

To be able to efficiently farm fish in a wide variety of environments, climate control is of utmost importance. ACE heat exchangers differ from the widely available heat exchangers in that they won't easily clog and are built with non-corrosive materials. By means of the counter current principle, up to 80% of the thermal energy can be recovered. The exchanger can be perfectly used in combination with a ACE degasser. All the plumbing needed to install the exchanger can be provided by ACE. Custom sizes and shapes are available upon request, to meet the requirements of your application.



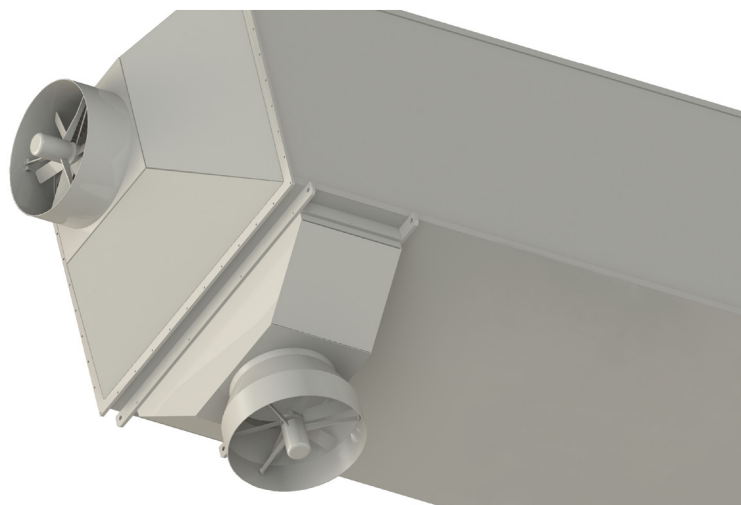
A lid can be lifted to clean the internals

| Technical specifications | Model 1 | Model 2 | Units |
|--------------------------|-------------|-------------|-------------------|
| Airflow min | 1000 | 10.000 | m ³ /h |
| Airflow max | 3200 | 16.000 | m ³ /h |
| Length | 5400 | 5530 | mm |
| Height | 1900 | 2750 | mm |
| Width | 1070 | 2070 | mm |
| Inlet/outlet size | 500 | 800 | mm |
| Power consumption fans* | 2 x 350 | 2 x 1800 | W |
| Voltage | 110/230/400 | 110/230/400 | V |

* power consumption given for 230V model



The heat exchanger can be lifted at the lifting lugs



Two fans are installed on the heat exchangers, one fan for the inflow of 'clean' air and one fan for the outflow of 'used' air